

Using PGP TrustCenter's Digital Certificates with BlackBerry

To use any of the security features with a BlackBerry handheld device, you must first obtain a digital certificate. If you do not already have a digital certificate, please visit PGP TrustCenter's website at <http://www.pgptrustcenter.com/digital-certificate-solutions> to obtain a "TC Personal ID" or "TC Business ID".

Sending S/MIME protected messages

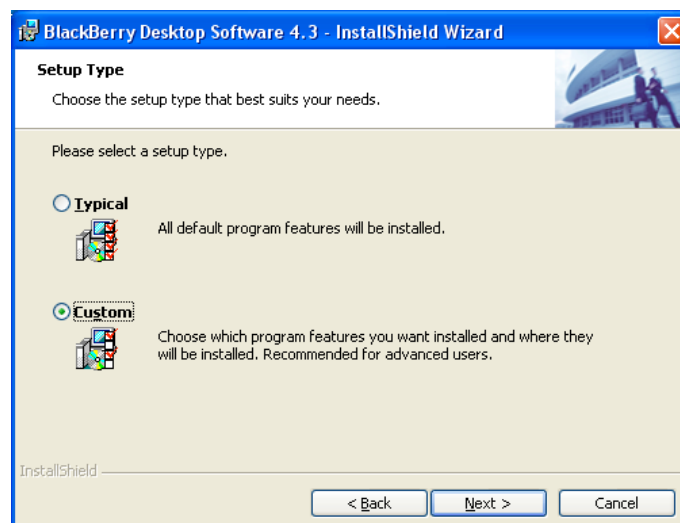
In order to use certificates with the BlackBerry, you must install BlackBerry's S/MIME Support Package. The S/MIME Support Package includes digital signing and encryption options that the user can define on the BlackBerry device, or that you can set and push to the BlackBerry device using the BlackBerry Enterprise Server IT policy. Certificates can be synchronized from your desktop by using BlackBerry's "Certificate Synchronization" feature which is installed by using the "custom" installation.

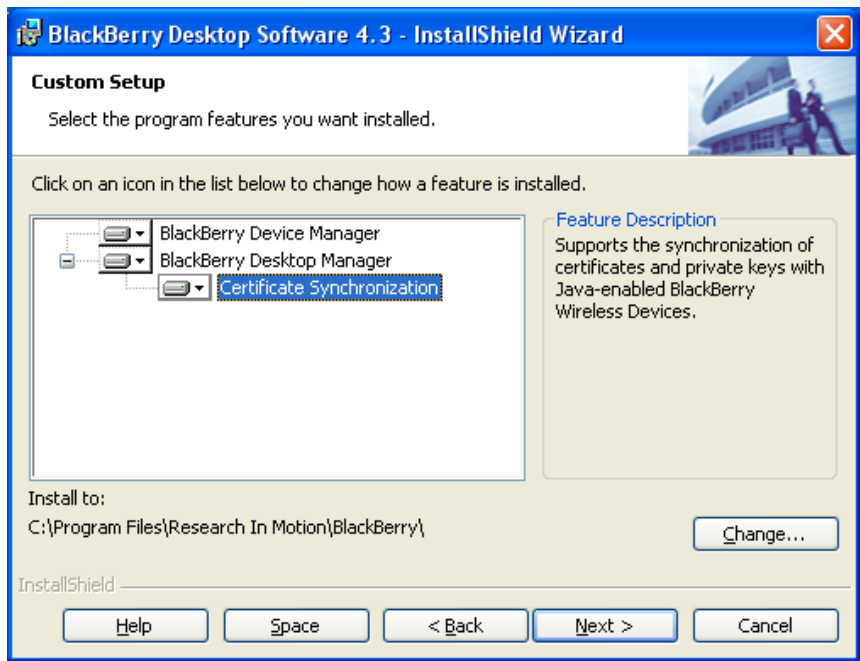
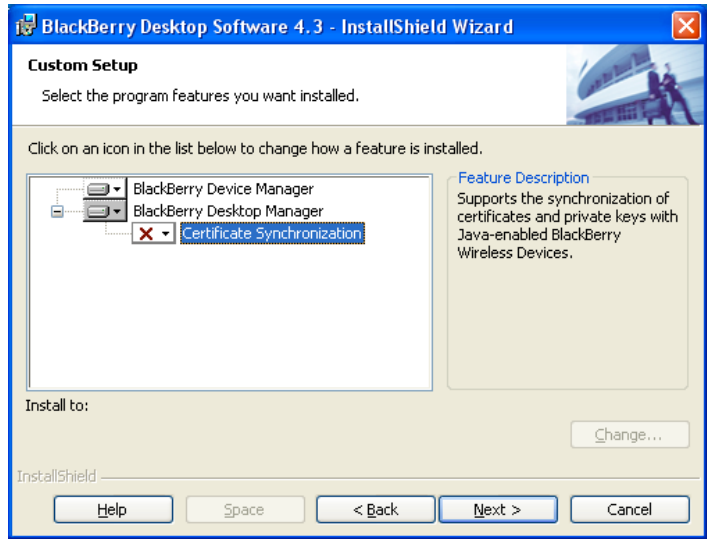
Install the S/MIME Support Package on your desktop computer

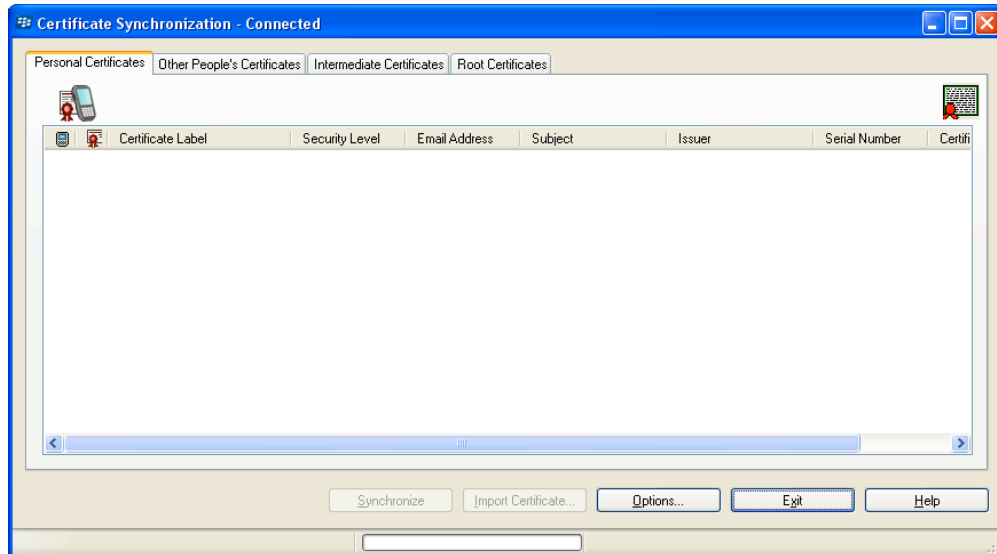
Insert the BlackBerry® Desktop Software installation CD into your CD drive. Complete the on-screen instructions.

- In the Setup Type window, select Custom.
- In the Custom Setup window, click Certificate Synchronization. Select this feature, and all subfeatures, to be installed on the local hard drive.

Once installed, you will now have a "Synchronize Certificates" option available in the BlackBerry Desktop Manager. Please see the screenshots below.







Further information can be downloaded from BlackBerry's website. Please see the "S/MIME Support Package User Guides" for more detailed instructions, including use with the BlackBerry Enterprise Server. These guides can be downloaded from BlackBerry's website by clicking on the following links:

S/MIME Support Package Version 4.1, User Guide Supplement:

http://www.blackberry.com/knowledgecenterpublic/livelink.exe/fetch/2000/8067/645045/8533/348781/1187042/S_MIME_Support_Package_version_4.1_User_Guide_Supplement?nodeid=1187093

S/MIME Support Package for BlackBerry Devices Version 4.5, Security Technical Overview:

http://docs.blackberry.com/en/admin/deliverables/2237/S_MIME_Support_Package_Version_4.5_Security_Technical_Overview.pdf

S/MIME Support Package for BlackBerry Smartphones, User Guide Supplement. BlackBerry 8800 Series and BlackBerry Curve 8300 Series:

http://docs.blackberry.com/en/smartphone_users/deliverables/3580/UserGuideSupp_SMIME_Support_Package_full_keypad_trackball.pdf